

PR Hoffman Good Template:



Clean plate – NO glue, no dirt, no chemical residue



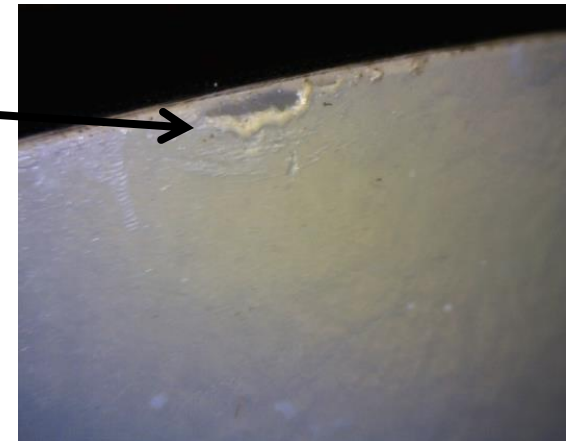
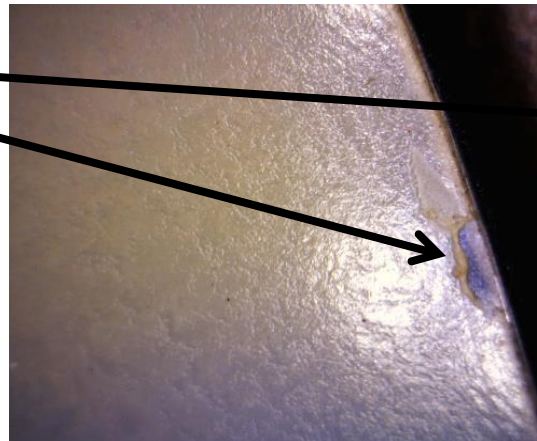
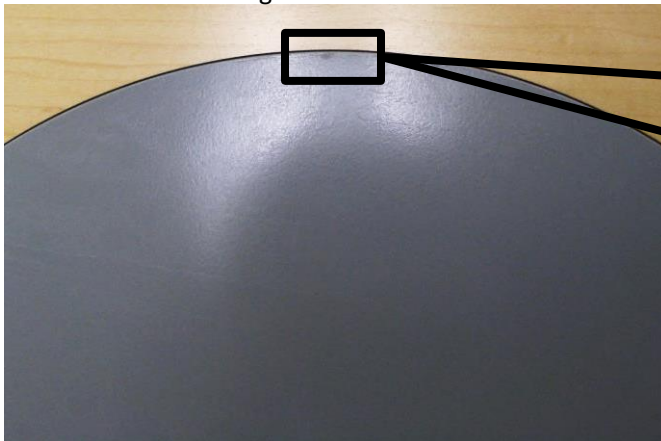
No adjustment OR reapplication of template after mounting



DO NOT APPLY NEXT TEMPLATE UNLESS PLATE IS CLEAN

Customer Issues Explained:

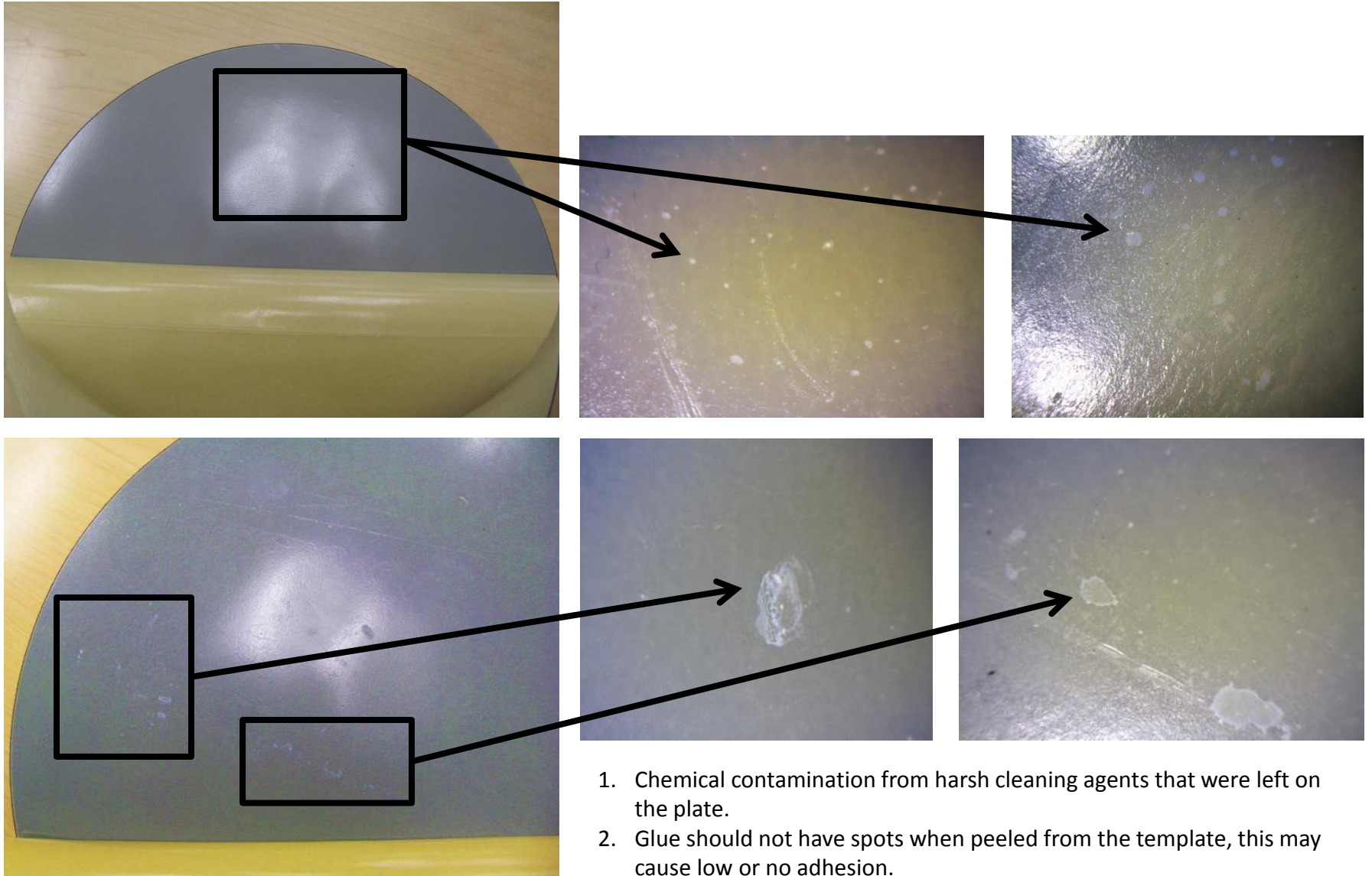
Issue #1: Glue Peeling



1. Glue removed from template shows that template stuck to the clean plate.
2. Glue that comes off and stays on the plate must be cleaned off before next template. Any glue left on plate may affect TTV/LTV.
3. If template stays on plate for 3 or more hours more glue peeling than pictures show is normal.

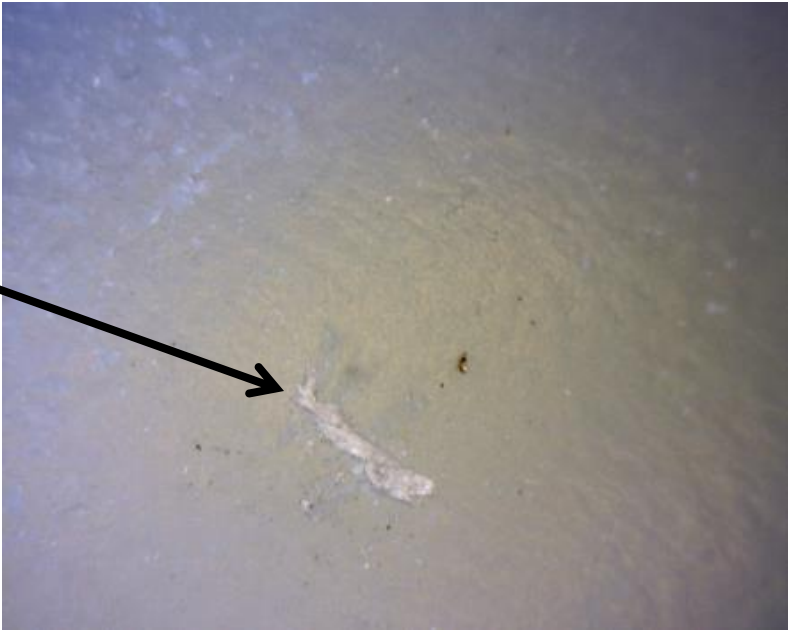
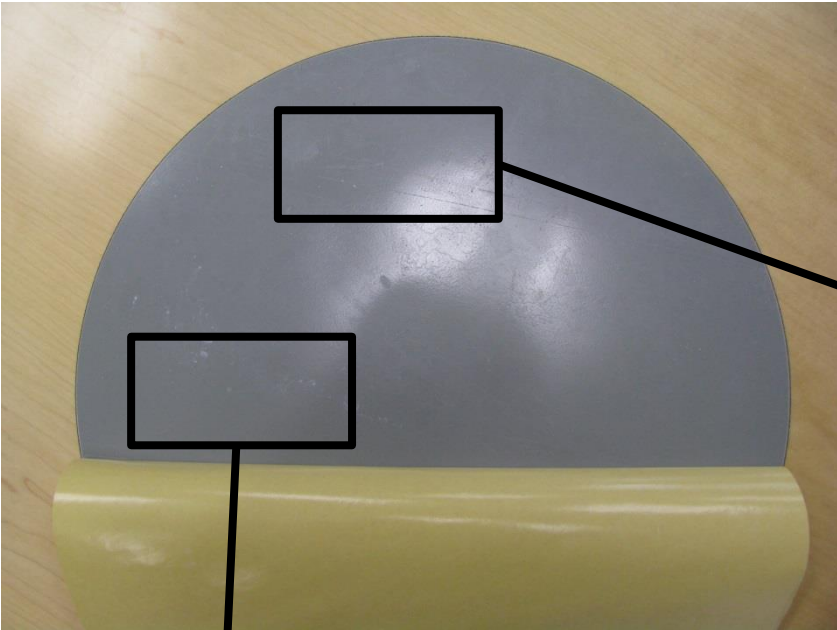
Customer Issues Explained:

Issue #2: Chemical Residue



Customer Issues Explained:

Issue #3: Debris



Glue left on plate from previous template

- 1. Dust, dirt and debris on plate may cause low or no adhesion.
- 2. Large pieces of debris may cause LTV/TTV or wafer diving issues.