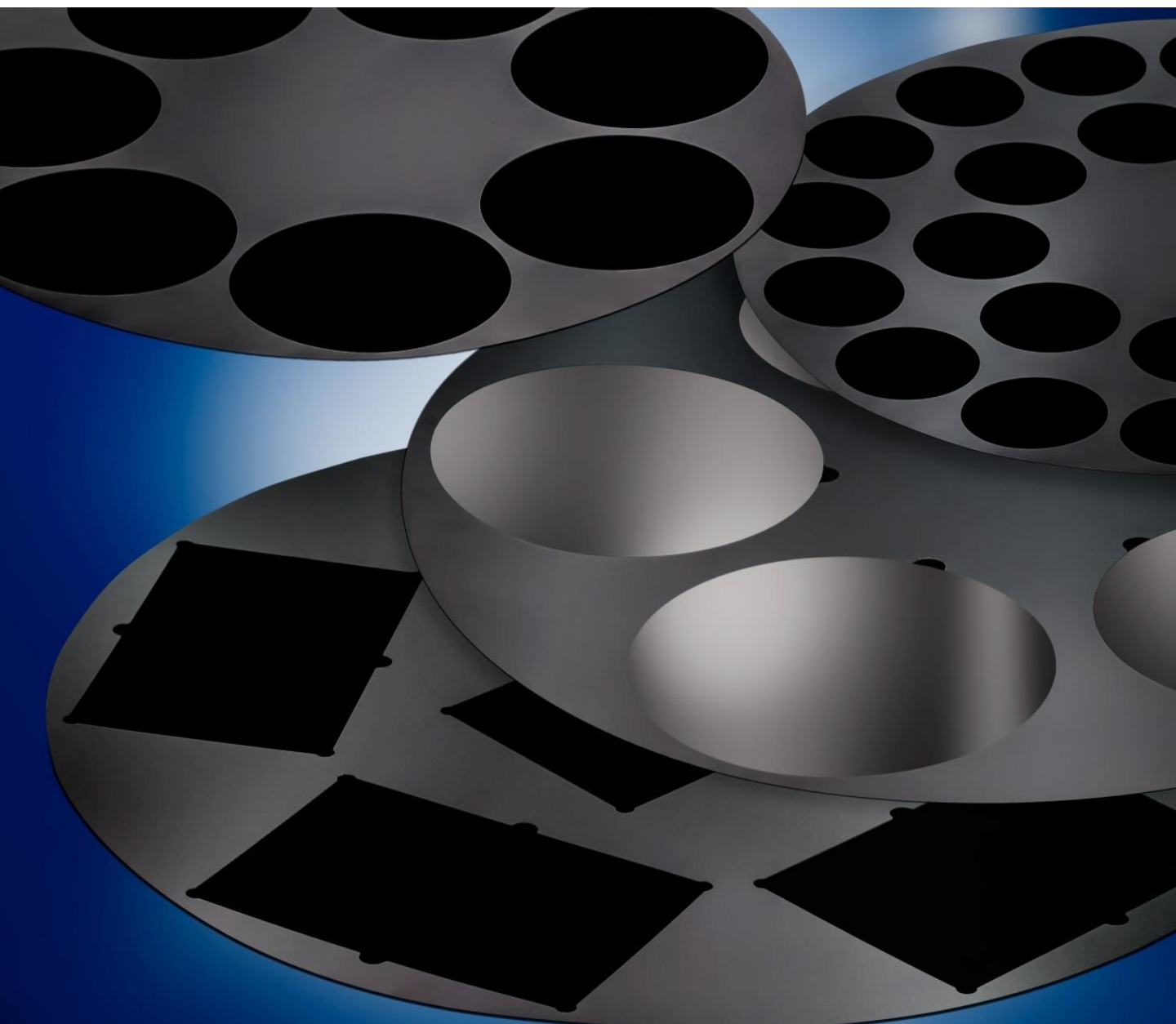


Innovations in Flatness
Since 1938

PR HOFFMAN MACHINE PRODUCTS:
Polishing Templates
CUSTOMIZED FOR ANY MACHINE – EVERY APPLICATION

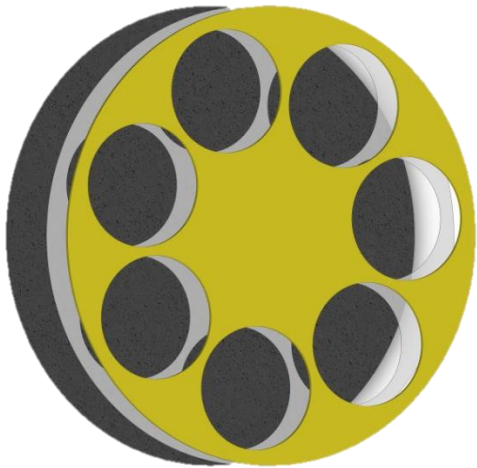
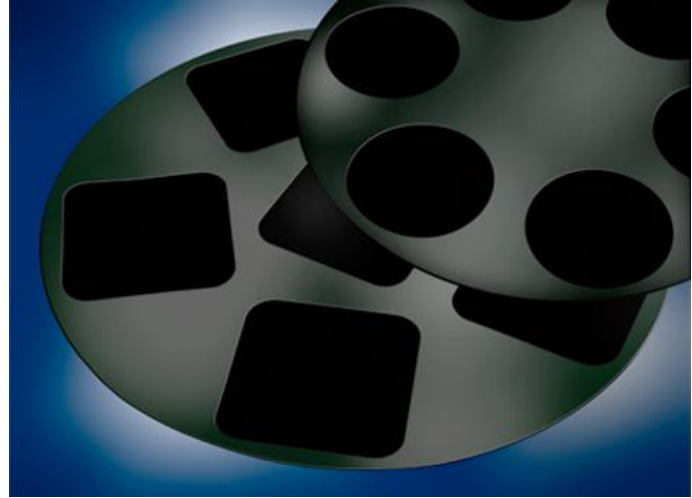


1517 COMMERCE AVENUE, CARLISLE, PA, USA 17015
TEL: 1 717-243-9900 FAX: 1 717-243-4542

WWW.PRHOFFMAN.COM

Single Side Processing

- Tightly Controlled Pocket Depth
- Process Specific Adhesives
- Product Specific Pads
- Custom Designed Layouts
- Wax Free Mounting

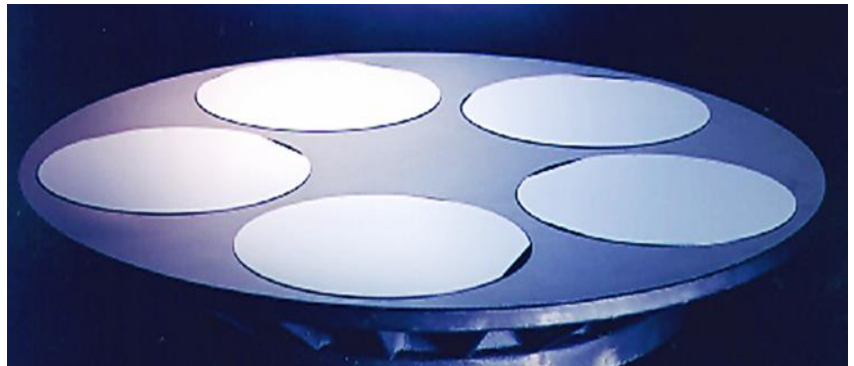


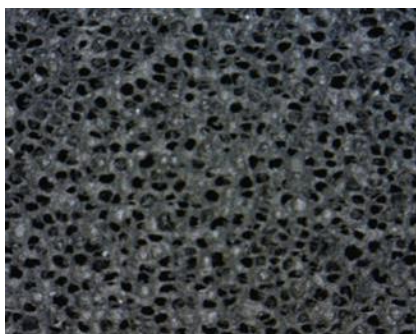
Benefits of PR Hoffman Templates

These high quality semiconductor / LED / optical sapphire grade fixtures are uniquely designed to fit any size product with a variety of options to accommodate each customer's specific polishing environment. Our sales team works with you from design to delivery to select materials that are suited for your product, environment and specification.

High Quality Raw Materials

PR Hoffman Machine Products designs and manufactures polishing template assemblies with tight tolerance raw materials sourced from around the world.





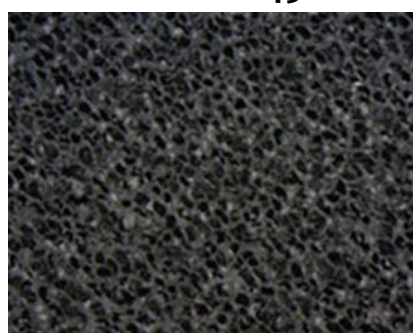
NAPCON-1000 / DM



NAPCON-1450



NAPCON-7000



NAPCON BP-107

| Pad | 1000 DM | 1000 | 7000 | 1450 | BP-107 |
|-------------------------|----------|---------|---------|------------|---------|
| Surface | Machined | Buffed | Buffed | Non-Buffed | Buffed |
| AVG Film Thickness (μm) | 525 ±15 | 520 ±20 | 590 ±30 | 610 ±50 | 390 ±30 |
| Pore Height (μm) | 300~390 | 300~390 | 300~390 | N/A | 100~190 |
| Pore Diameter (μm) | 35~55 | 35~55 | 33~53 | N/A | 41~51 |
| Pore Rate (%) | 18~28 | 18~28 | 20~30 | N/A | 18~28 |
| Compressibility (%) | 27~37 | 27~37 | 6~20 | 3~7 | 13~23 |

Maintaining a leadership position as a global supplier to leading edge-technology industries requires a relentless commitment to quality. As an ISO 9001 compliant facility, our commitment is evidenced in our personnel, our facilities, our service and our philosophy.

From design to delivery, PR Hoffman employees are dedicated to continuous improvement. We purchase only state-of-the-art manufacturing equipment and materials to provide our customers with high quality lapping and polishing products. By developing long-term partnerships with a worldwide vendor base, we ensure that consistent, high-quality materials are always available.

Our international sales force and quality division are trained to react quickly to all our customers' needs. Our dedicated design staff will help fully customize our products for your specific application.

Most importantly, we focus, not on orders, but on lasting partnerships with quality-minded customers, and we guarantee satisfaction by treating each customer like our only customer.



N° US006824-2

Contact us :

prhoff@prhoffman.com

+1 (717) 243-9900

Your Success = Our Success